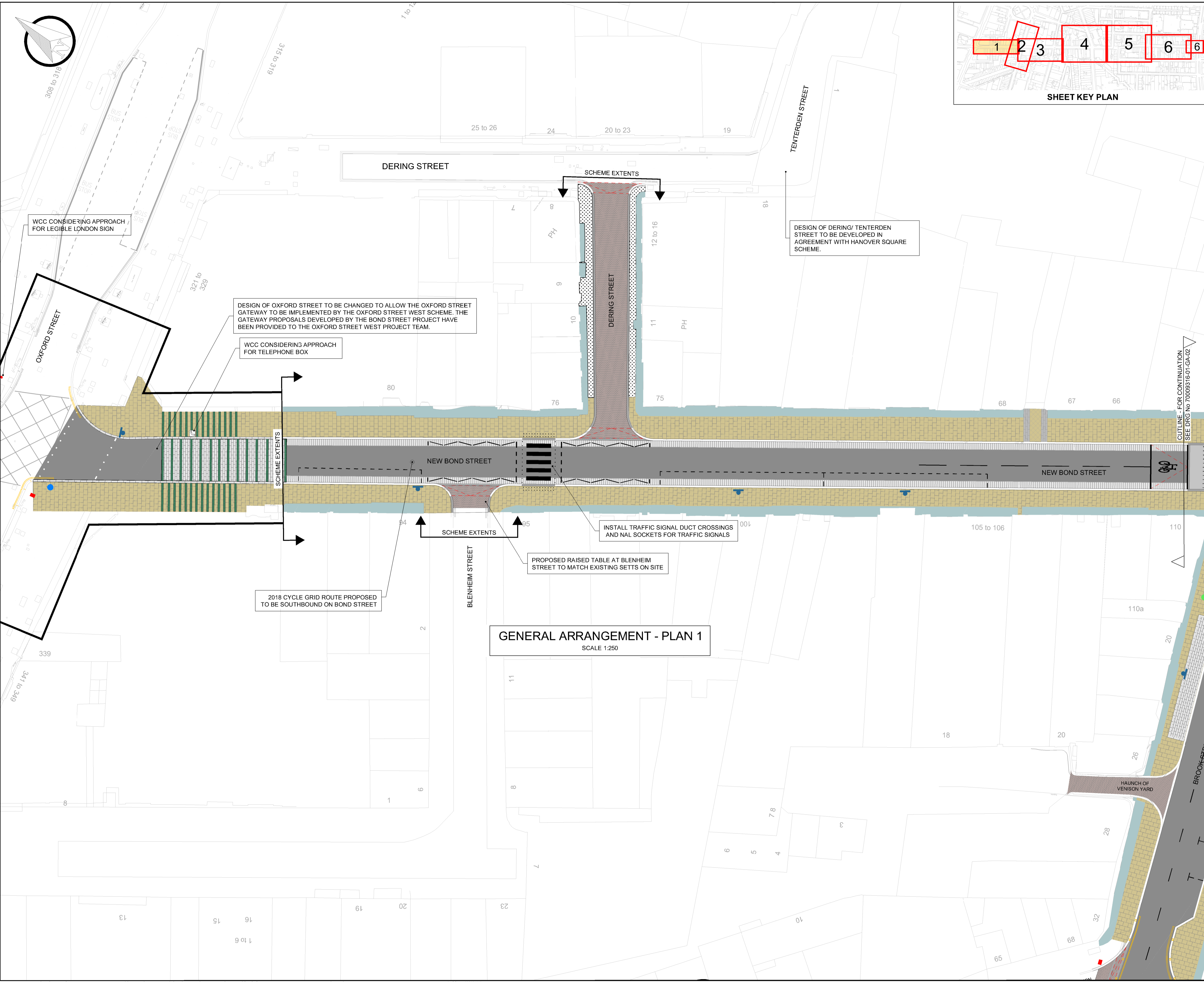


- KEY**
- PROPOSED 600xRANDOM LENGTHx63mm THICK YORKSTONE PAVERS (75mm THICK WHERE WITHIN 1m OF KERB) LAID ON 100mm C16/20 CONCRETE BASE (150mm THICK WHERE WITHIN 1m OF KERB) AND 50mm SAND/CEMENT BED WITH MAGICOTE PAVING MEMBRANE, OR SIMILAR APPROVED.
  - EXISTING BACK OF FOOTWAY CELLAR COVERS OR SIMILAR, TO BE REPLACED AND INFILLED WITH CONCRETE. SCREED WITH COLOUR TO MATCH YORKSTONE PAVING OR SIMILAR APPROVED, WHERE PRACTICALLY POSSIBLE.
  - PROPOSED HRA CARRIAGEWAY SURFACE COURSE 40mm THICK, ON HRA BINDER COURSE 60mm THICK, USED IN BETWEEN JUNCTIONS.
  - PROPOSED TARMAC LAFARGE ULTICOLOUR SMA MID-GREY CARRIAGEWAY SURFACE COURSE 40mm THICK, ON HRA BINDER COURSE 60mm THICK, USED AT JUNCTIONS AND RAISED TABLES UNLESS STATED OTHERWISE.
  - PROPOSED GRANITE KERBS 'MARGINS', LAID TRANSVERSELY AS CARRIAGEWAY DELINEATION, 900mm LONG x 300mm WIDE x 200mm DEEP, SAWN CUT TOP AND SIDES FLAMED FINISH.
  - PROPOSED GRANITE KERBS LAID IN MULTIPLE COURSES AND LONGITUDINALLY AS A FOOTWAY FEATURE, 900mm LONG x 300mm WIDE x 200mm DEEP, SAWN CUT TOP AND SIDES.
  - PROPOSED GRANITE KERBS LAID IN MULTIPLE COURSES AND TRANSVERSELY AS A FOOTWAY FEATURE, 900mm LONG x 300mm WIDE x 200mm DEEP, SAWN CUT TOP AND SIDES.
  - PROPOSED SPECIAL PAVING OUTSIDE SELECTED FORECOURTS AS SHOWN, TO BE CONFIRMED BY PUBLICA.
  - NEW GRANITE SETTS, MIX OF UP TO 5 COLOURS, TBC, SIZE 250x150x100mm MACHINED 5 SIDES, FLAMED TOP ON 50mm STENITEC PROPRIETARY BEDDING MORTAR.
  - FLAMED GRANITE SETTS, SAME SPECIFICATION AS ABOVE BUT IN DIFFERENT COLOURS TO AID DIFFERENTIATION AND DELINEATION.
  - EXISTING FOOTWAY TO BE RE-LAID TO SUIT NEW RAISED TABLE, IF REQUIRED.
  - TEMPORARY PAVED SURFACE - ARTIFICIAL STONE PAVING.
  - TEMPORARY KERB LINE
  - PROPOSED 300mm WIDE x 200mm DEEP GRANITE KERB ON 150mm C16/20 WET LEAN CONCRETE, WITH 50mm UPSTAND FINE PICKED FINISH.
  - PROPOSED 300mm WIDE x 200mm DEEP SPLAYED GRANITE KERB ON 150mm C16/20 WET LEAN CONCRETE, WITH 50mm UPSTAND (USED AT LOADING BAYS) FINE PICKED FINISH.
  - PROPOSED 300mm WIDE x 200mm DEEP GRANITE KERB ON 150mm C16/20 WET LEAN CONCRETE, FLUSH WITH CARRIAGEWAY (USED WITH RAISED TABLES) FINE PICKED FINISH.
  - PROPOSED 300mm WIDE x 200mm DEEP TRANSITION GRANITE KERB ON 150mm THICK C16/20 WET LEAN CONCRETE, FROM SPLAYED TO FLUSH OR VICE-VERSA, LENGTH OF TRANSITIONS VARIES FINE PICKED FINISH.
  - RAMPED SURFACES
  - PROPOSED BRASS STUDS TO BE INSTALLED AT ALL CONTROLLED CROSSINGS TO REPLICATE TACTILES SENSATION.
  - PROPOSED WHITE LINE MARKING
  - EXISTING 300x200mm GRANITE KERB
  - PROPOSED RELOCATION OF KIOSK
  - RELOCATED ALLIES BENCH STATURE
  - PROPOSED BENCH
  - EXISTING SANTANDER CYCLE HIRE BICYCLES TO BE RETAINED
  - PROPOSED LOCATION FOR NEW BICYCLE RACKS
  - PROPOSED TREE LOCATION DETAILS TO BE AGREED IN INITIAL DESIGN.
  - PROPOSED TRAFFIC SIGN POSTS
  - PROPOSED TRAFFIC SIGNAL
  - EXISTING TELEPHONE BOX
  - FLOOR PLAQUE
  - EXISTING CCTV POINT
  - EXISTING POST BOX
  - EXISTING LEGIBLE LONDON SIGN
  - PROPOSED LEGIBLE LONDON SIGN
  - RELOCATED TFL CYCLE HIRE STANDS
- NOTES:**
- THIS DRAWING IS TO BE READ IN CONJUNCTION WITH ALL OTHER DRAWINGS AND DOCUMENTS AS SHOWN BY THE SCHEME DRAWINGS AND DOCUMENTS REGISTER
  - SPECIAL PAVING AREAS OUTSIDE ENTRANCES TO SELECTED 'ARCADES'. EXACT DESIGN TO BE CONFIRMED BY PUBLICA.



WCC CONSIDERING APPROACH FOR LEGIBLE LONDON SIGN

DESIGN OF OXFORD STREET TO BE CHANGED TO ALLOW THE OXFORD STREET GATEWAY TO BE IMPLEMENTED BY THE OXFORD STREET WEST SCHEME. THE GATEWAY PROPOSALS DEVELOPED BY THE BOND STREET PROJECT HAVE BEEN PROVIDED TO THE OXFORD STREET WEST PROJECT TEAM.

WCC CONSIDERING APPROACH FOR TELEPHONE BOX

DESIGN OF DERING/ TENTERDEN STREET TO BE DEVELOPED IN AGREEMENT WITH HANOVER SQUARE SCHEME.

2018 CYCLE GRID ROUTE PROPOSED TO BE SOUTHBOUND ON BOND STREET

INSTALL TRAFFIC SIGNAL DUCT CROSSINGS AND NAL SOCKETS FOR TRAFFIC SIGNALS

PROPOSED RAISED TABLE AT BLENHEIM STREET TO MATCH EXISTING SETTS ON SITE

### GENERAL ARRANGEMENT - PLAN 1

SCALE 1:250

CUTLINE - FOR CONTINUATION SEE DRG NO 70009316-01-GA-02

REV	DATE	BY	DESCRIPTION	CHK	APP
A	16.09.2016	MB	ISSUED FOR CLIENT REVIEW	DA	JN

**INITIAL DESIGN**

25 Mandela Way, London, SE1 5SZ  
www.conway.co.uk www.wspgroup.com

**Client**

City of Westminster

**Project**

BOND STREET  
STREETSCAPE IMPROVEMENTS

**Title**

INITIAL DESIGN STAGE  
GENERAL ARRANGEMENT  
SHEET 1 OF 6

SCALE @ A1	DATE	DESIGN/DRAWN	CHECKED	APPROVED	SHEET
1:250	09-08-2016	JT/MEC	CDS	A1	
JOB No.	FMC PROJECT No.	TBC	BREF/DDB No.	TBC	
DRAWING No.	70009316-02-GA-01		REV.	A	

This map is reproduced from Ordnance Survey material with the permission of Ordnance Survey on behalf of the Controller of Her Majesty's Stationery Office © Crown copyright. Unauthorised reproduction infringes Crown copyright and may lead to prosecution or civil proceedings. (WCC)(LA10009597)