

DETAIL F
SCALE @ A1 1:100

GENERAL ARRANGEMENT - PLAN 4
SCALE 1:250

- KEY**
- PROPOSED 600xRANDOM LENGTHx63mm THICK YORKSTONE PAVERS (75mm THICK WHERE WITHIN 1m OF KERB) LAID ON 100mm C16/20 CONCRETE BASE (150mm THICK WHERE WITHIN 1m OF KERB) AND 50mm SAND/CEMENT BED WITH MAGGICOTE PAVING MEMBRANE, OR SIMILAR APPROVED.
 - EXISTING BACK OF FOOTWAY CELLAR COVERS OR SIMILAR, TO BE REPLACED AND FILLED WITH CONCRETE SCREED WITH COLOUR TO MATCH YORKSTONE PAVING OR SIMILAR APPROVED, WHERE PRACTICALLY POSSIBLE.
 - PROPOSED HRA CARRIAGEWAY SURFACE COURSE 40mm THICK, ON HRA BINDER COURSE 60mm THICK, USED IN BETWEEN JUNCTIONS.
 - PROPOSED TARMAC LAFARGE ULTICOLOUR SMA MID-GRY CARRIAGEWAY SURFACE COURSE 40mm THICK ON HRA BINDER COURSE 60mm THICK, USED AT JUNCTIONS AND RAISED TABLES UNLESS STATED OTHERWISE.
 - PROPOSED GRANITE KERBS 'MARGINS', LAID TRANSVERSELY AS CARRIAGEWAY DELINEATION, 900mm LONG x 300mm WIDE x 200mm DEEP, SAWN CUT TOP AND SIDES FLAMED FINISH.
 - PROPOSED GRANITE KERBS LAID IN MULTIPLE COURSES AND LONGITUDINALLY AS A LOADING BAY FEATURE, 900mm LONG x 300mm WIDE x 200mm DEEP, SAWN CUT TOP AND SIDES.
 - PROPOSED GRANITE KERBS LAID IN MULTIPLE COURSES AND TRANSVERSELY AS A FOOTWAY FEATURE, 900mm LONG x 300mm WIDE x 200mm DEEP, SAWN CUT TOP AND SIDES.
 - PROPOSED SPECIAL PAVING OUTSIDE SELECTED FORECOURTS AS SHOWN, TO BE CONFIRMED BY PUBLICA.
 - NEW GRANITE SETTS, MIX OF UP TO 5 COLOURS, TBC, SIZE 250x150x100mm MACHINED 5 SIDES, FLAMED TOP ON 50mm STEINTEC PROPRIETARY BEDDING MORTAR.
 - FLAMED GRANITE SETTS, SAME SPECIFICATION AS ABOVE BUT IN DIFFERENT COLOURS TO AID DIFFERENTIATION AND DELINEATION.
 - EXISTING FOOTWAY TO BE RE-LAID TO SUIT NEW RAISED TABLE, IF REQUIRED.
 - TEMPORARY PAVED SURFACE - ARTIFICIAL STONE PAVING.
 - TEMPORARY KERB LINE
 - PROPOSED 300mm WIDE x 200mm DEEP GRANITE KERB ON 150mm C16/20 WET LEAN CONCRETE, WITH 50mm UPSTAND FINE PICKED FINISH.
 - PROPOSED 300mm WIDE x 200mm DEEP SPLAYED GRANITE KERB ON 150mm C16/20 WET LEAN CONCRETE, WITH 50mm UPSTAND (USED AT LOADING BAYS) FINE PICKED FINISH.
 - PROPOSED 300mm WIDE x 200mm DEEP GRANITE KERB ON 150mm C16/20 WET LEAN CONCRETE, FLUSH WITH CARRIAGEWAY (USED WITH RAISED TABLES) FINE PICKED FINISH.
 - PROPOSED 300mm WIDE x 200mm DEEP TRANSITION GRANITE KERB ON 150mm THICK C16/20 WET LEAN CONCRETE, FROM SPLAYED TO FLUSH OR VICE-VERSA, LENGTH OF TRANSITIONS VARIES FINE PICKED FINISH.
 - RAMPED SURFACES
 - PROPOSED BRASS STUDS TO BE INSTALLED AT ALL CONTROLLED CROSSING TO REPLICATE TACTILES SENSATION.
 - PROPOSED WHITE LINE MARKING
 - EXISTING 300x200mm GRANITE KERB
 - PROPOSED RELOCATION OF KIOSK
 - RELOCATED ALLIES BENCH STATUE
 - PROPOSED BENCH
 - EXISTING SANTANDER CYCLE HIRE BICYCLE S TO BE RETAINED
 - PROPOSED LOCATION FOR NEW BICYCLE RACKS
 - PROPOSED TREE LOCATION DETAILS TO BE AGREED IN INITIAL DESIGN.
 - PROPOSED TRAFFIC SIGN POSTS
 - PROPOSED TRAFFIC SIGNAL
 - EXISTING TELEPHONE BOX
 - FLOOR PLAQUE
 - EXISTING CCTV POINT
 - EXISTING POST BOX
 - EXISTING LEGIBLE LONDON SIGN
 - PROPOSED LEGIBLE LONDON SIGN
 - RELOCATED TRL CYCLE HIRE STANDS

NOTES :

1. THIS DRAWING IS TO BE READ IN CONJUNCTION WITH ALL OTHER DRAWINGS AND DOCUMENTS AS SHOWN BY THE SCHEME DRAWINGS AND DOCUMENTS REGISTER.
2. SPECIAL PAVING AREAS OUTSIDE ENTRANCES TO SELECTED ARCADES, EXACT DESIGN TO BE CONFIRMED BY PUBLICA.

A	16.09.2016	MB	ISSUED FOR CLIENT REVIEW	DA	JN
REV	DATE	BY	DESCRIPTION	CHK	APD

DRAWING STATUS

INITIAL DESIGN

25 Mandela Way, London, SE1 5SZ
www.tfmconway.co.uk www.wspgroup.com

CLIENT

City of Westminster

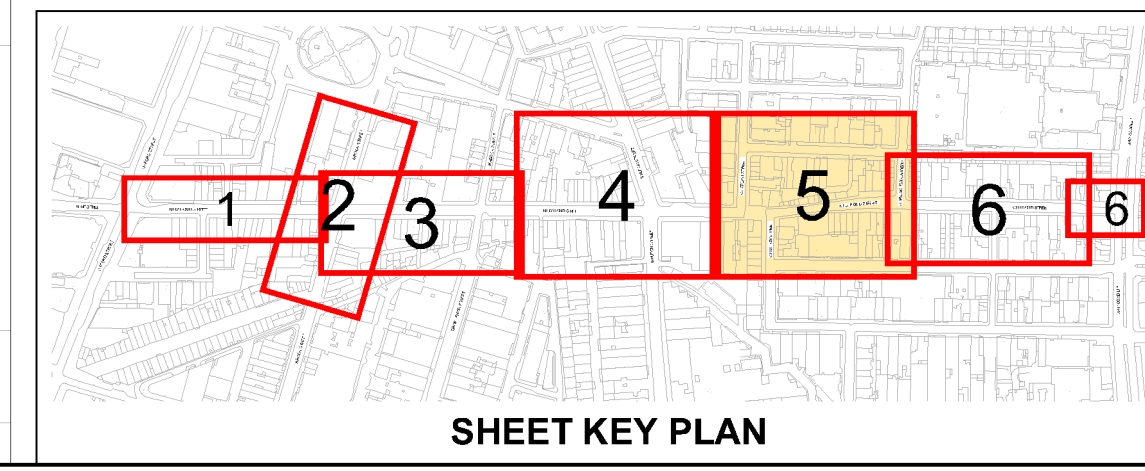
PROJECT

**BOND STREET
STREETSCAPE IMPROVEMENTS**

TITLE

**INITIAL DESIGN STAGE
GENERAL ARRANGEMENT
SHEET 5 OF 6**

SCALE @ A1	DATE	DESIGN/DRAWN	CHECKED	APPROVED	SHEET
1:250	09-08-2016	JT/MEC		CDS	A1
JOB No.	FMC PROJECT No.	TBC	BRIEF/DB No.	TBC	
70009316					
DRAWING No.	REV.				
70009316-02-GA-05	A				



This map is reproduced from Ordnance Survey material with the permission of Ordnance Survey on behalf of the Controller of Her Majesty's Stationery Office © Crown copyright. Unauthorised reproduction infringes Crown copyright and may lead to prosecution or civil proceedings. (WCC)(LA10009597)