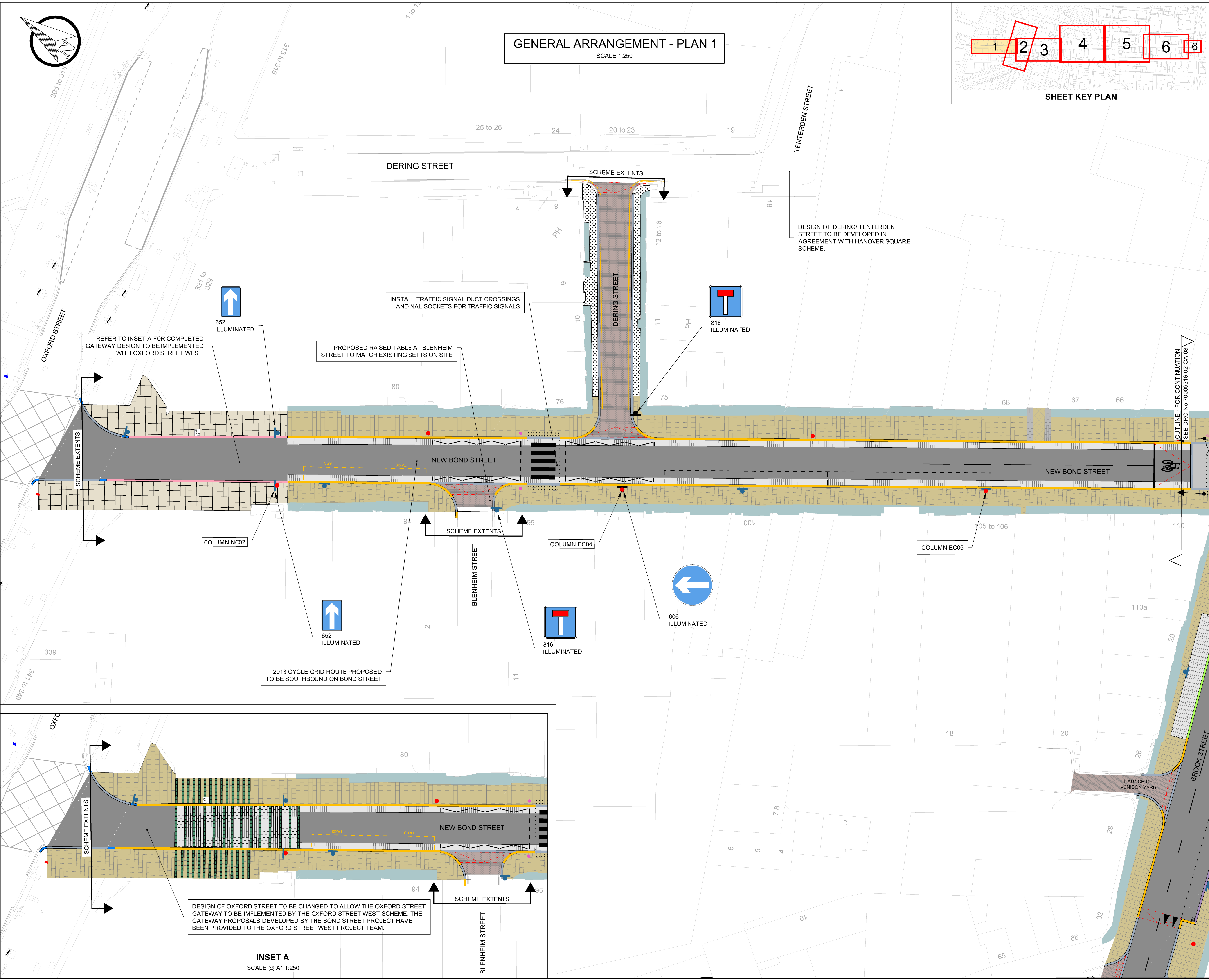
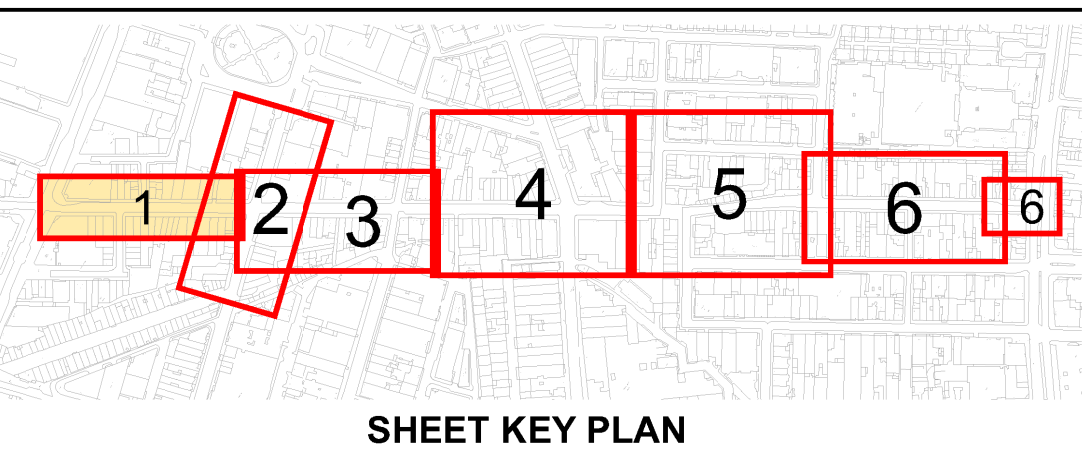


GENERAL ARRANGEMENT - PLAN 1

SCALE 1:250



REFER TO INSET A FOR COMPLETED GATEWAY DESIGN TO BE IMPLEMENTED WITH OXFORD STREET WEST.

PROPOSED RAISED TABLE AT BLENHEIM STREET TO MATCH EXISTING SETTS ON SITE

INSTALL TRAFFIC SIGNAL DUCT CROSSINGS AND NAL SOCKETS FOR TRAFFIC SIGNALS

DESIGN OF DERING/ TENTERDEN STREET TO BE DEVELOPED IN AGREEMENT WITH HANOVER SQUARE SCHEME.

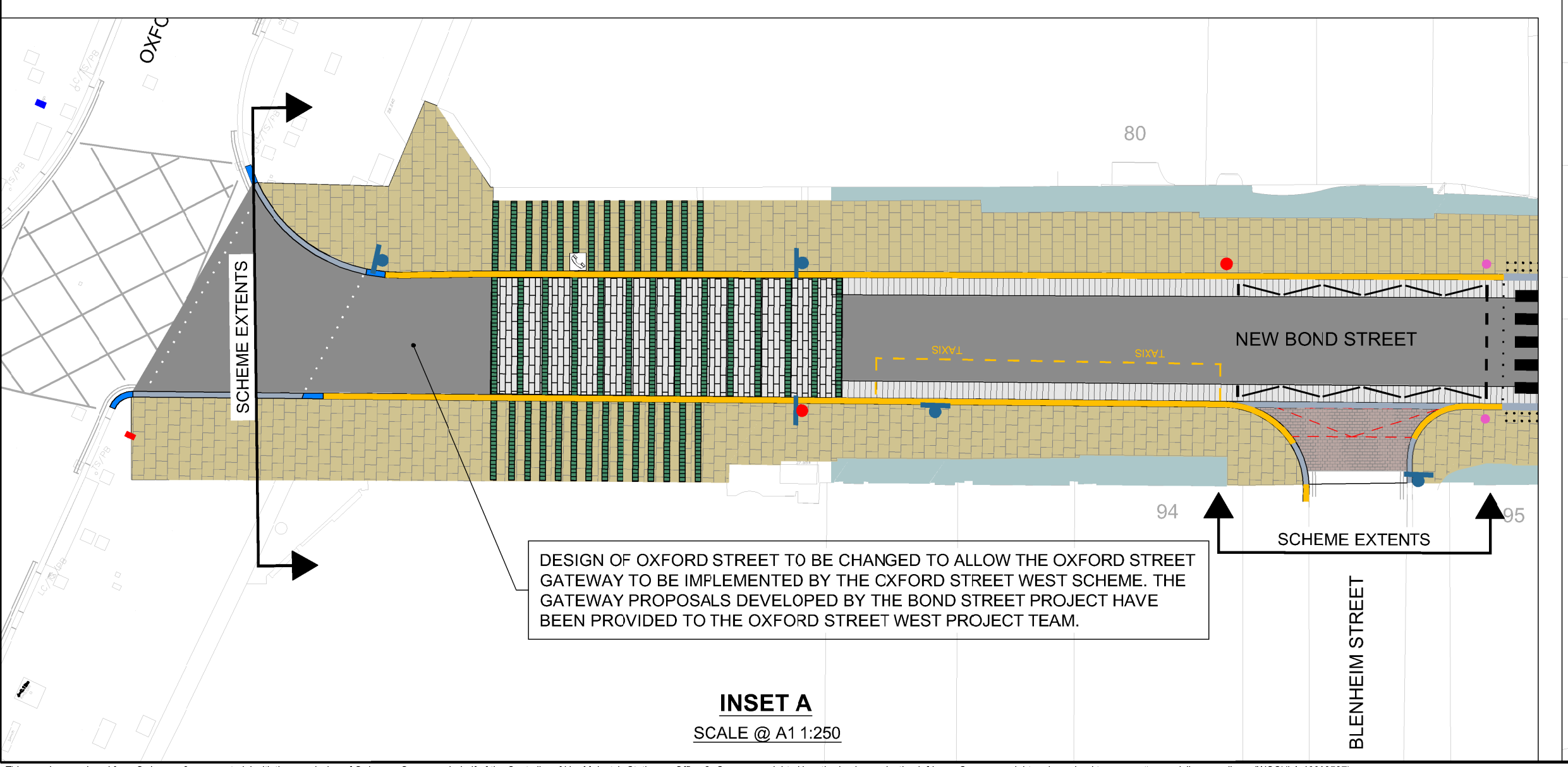
CUTLINE - FOR CONTINUATION SEE DRG. No 70009316-02-GA-03

2018 CYCLE GRID ROUTE PROPOSED TO BE SOUTHBOUND ON BOND STREET

DESIGN OF OXFORD STREET TO BE CHANGED TO ALLOW THE OXFORD STREET GATEWAY TO BE IMPLEMENTED BY THE OXFORD STREET WEST SCHEME. THE GATEWAY PROPOSALS DEVELOPED BY THE BOND STREET PROJECT HAVE BEEN PROVIDED TO THE OXFORD STREET WEST PROJECT TEAM.

INSET A

SCALE @ A1:250



REV	DATE	BY	DESCRIPTION	CHK	APP
A	10.02.2017	MEC	ISSUED FOR INFORMATION	DA	CDS

DRAWING STATUS: DETAILED DESIGN

25 Mandela Way, London, SE1 5SZ
www.falconway.co.uk www.wspgroup.com

City of Westminster

PROJECT: BOND STREET STREETScape IMPROVEMENTS

TITLE: FINAL DESIGN SHEET 1 OF 6

SCALE @ A1	DATE	DESIGN/DRAWN	CHECKED	APPROVED	SHEET
1:250	20-01-2017	JT/MEC	DA	CDS	A1
JOB No. 70009316	FMC PROJECT No. WWESA 1458	BRIEF/DSB No.	TBC		
DRAWING No. 70009316-02-03-FD-02					A

C:\Users\jason\appdata\local\temp\vsPublish_555A\70009316-03-FD-01.td 07 Aug 2017 - 5:30pm

This map is reproduced from Ordnance Survey material with the permission of Ordnance Survey on behalf of the Controller of Her Majesty's Stationery Office © Crown copyright. Unauthorised reproduction infringes Crown copyright and may lead to prosecution or civil proceedings. (WCC)(LA10005997)