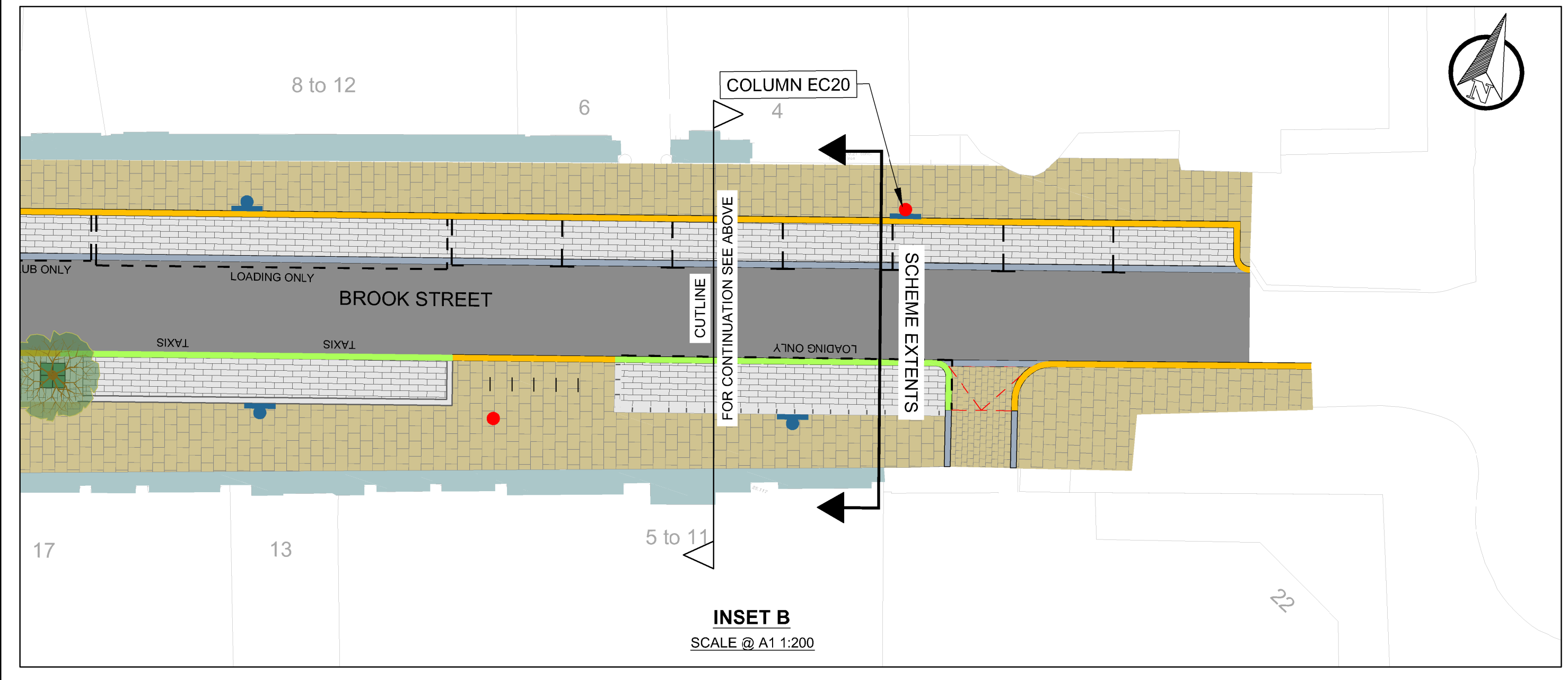
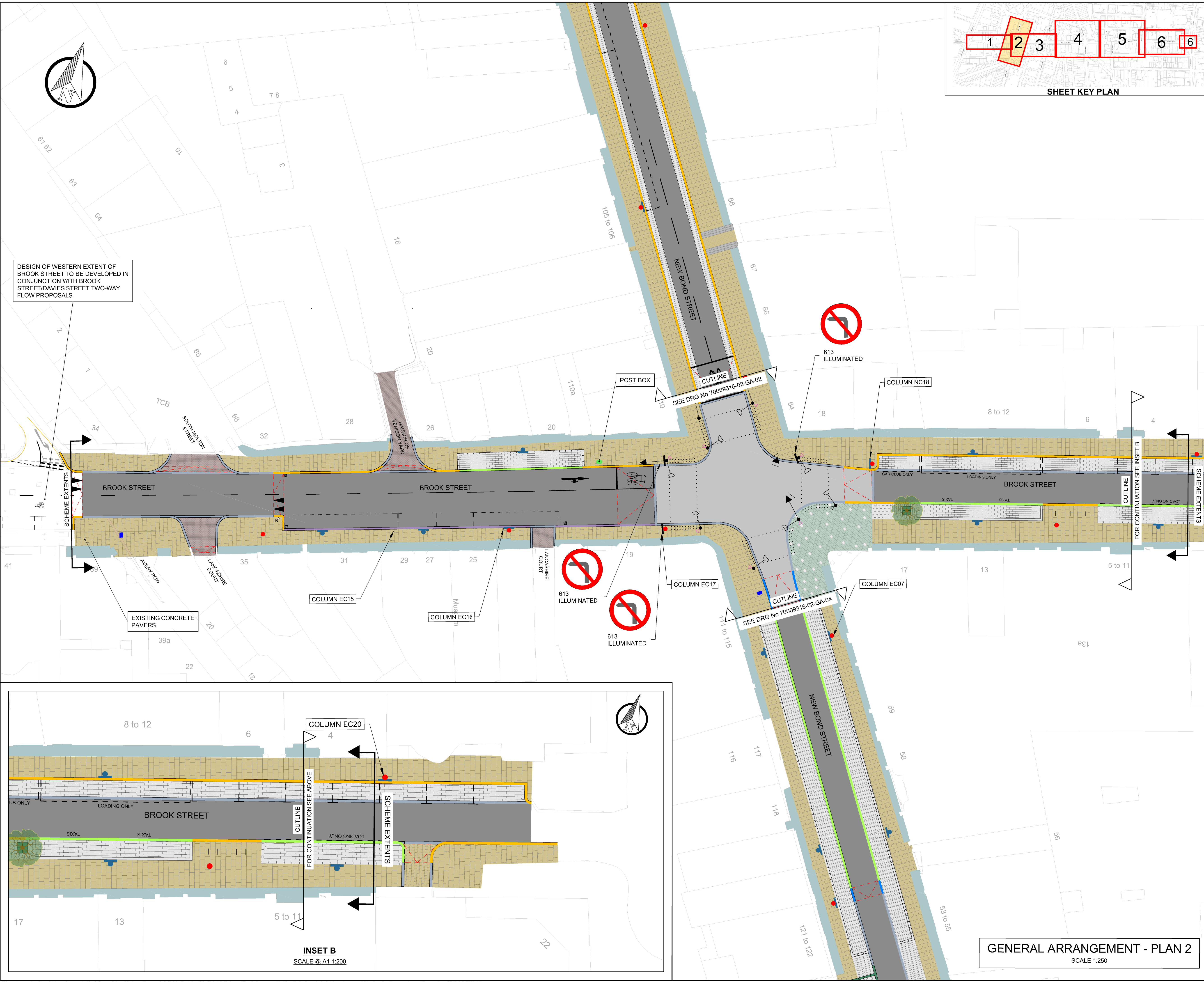


NOTE:  
FOR NOTES & LEGEND KEY PLEASE REFER TO DRAWING  
70009316-02-GA-01.

DESIGN OF WESTERN EXTENT OF  
BROOK STREET TO BE DEVELOPED IN  
CONJUNCTION WITH BROOK  
STREET/DAVIES STREET TWO-WAY  
FLOW PROPOSALS



INSET B  
SCALE @ A1 1:200

GENERAL ARRANGEMENT - PLAN 2  
SCALE 1:250

A	10.02.2017	MEC	ISSUED FOR INFORMATION	DA	CDS
REV	DATE	BY	DESCRIPTION	CHK	APD

DRAWING STATUS  
**DETAILED DESIGN**

25 Mandela Way, London, SE1 5SZ  
www.fronconway.co.uk www.wspgroup.com

CLIENT  
  
City of Westminster

PROJECT  
BOND STREET  
STREETSCAPE IMPROVEMENTS

TITLE  
FINAL DESIGN  
SHEET 2 OF 6

SCALE @ A1	DATE	DESIGN/DRAWN	CHECKED	APPROVED	SHEET
1:250	20-01-2017	JT/MEC	DA	CDS	A1
JOB No.	FMC PROJECT No.	BRIEF/DSS No.			
70009316	WWESA 1458	TBC			

DRAWING No. 70009316-03-FD-03  
REV. A

This map is reproduced from Ordnance Survey material with the permission of Ordnance Survey on behalf of the Controller of Her Majesty's Stationery Office © Crown copyright. Unauthorised reproduction infringes Crown copyright and may lead to prosecution or civil proceedings. (WCC)(LA 10009597)