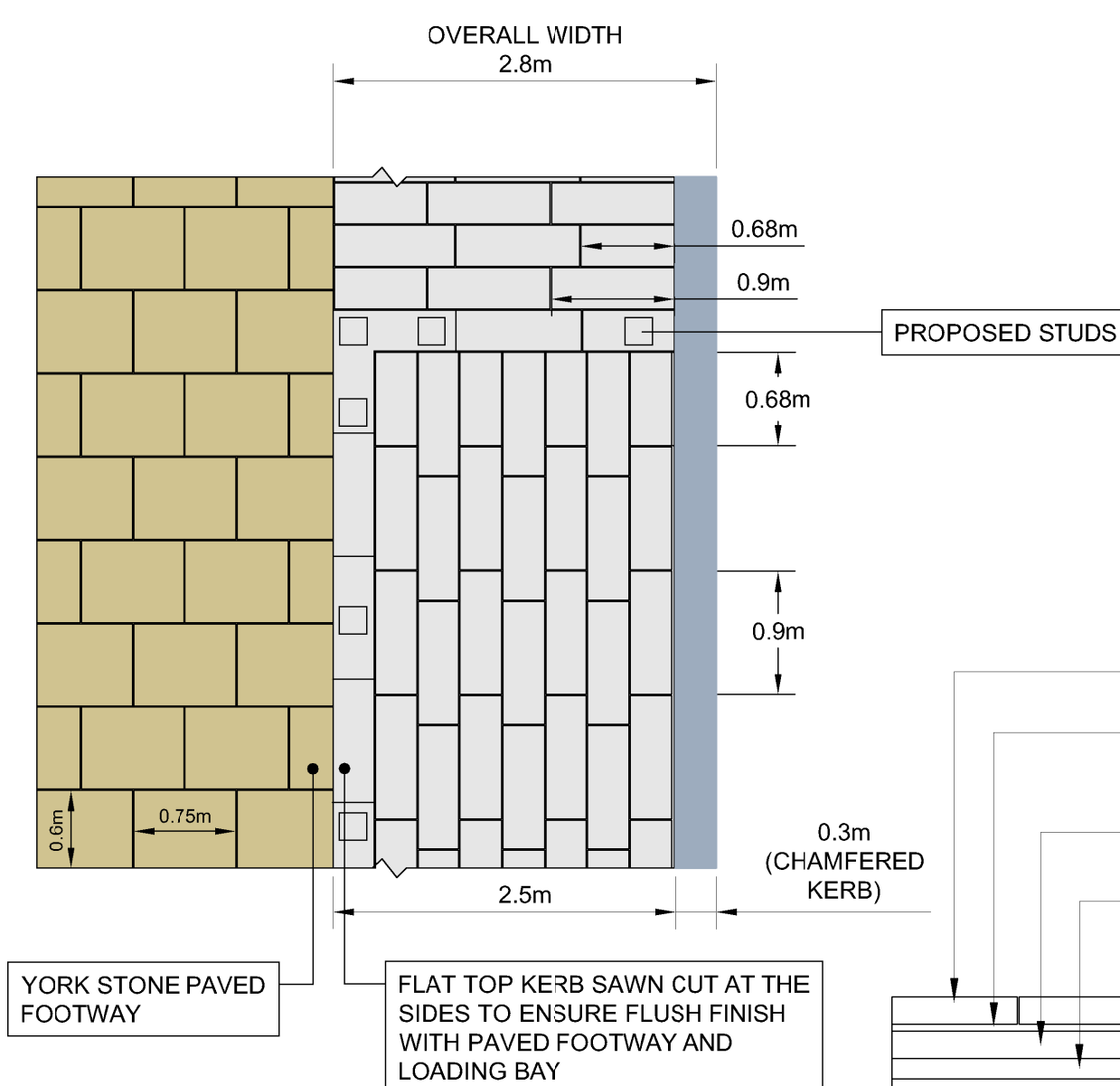
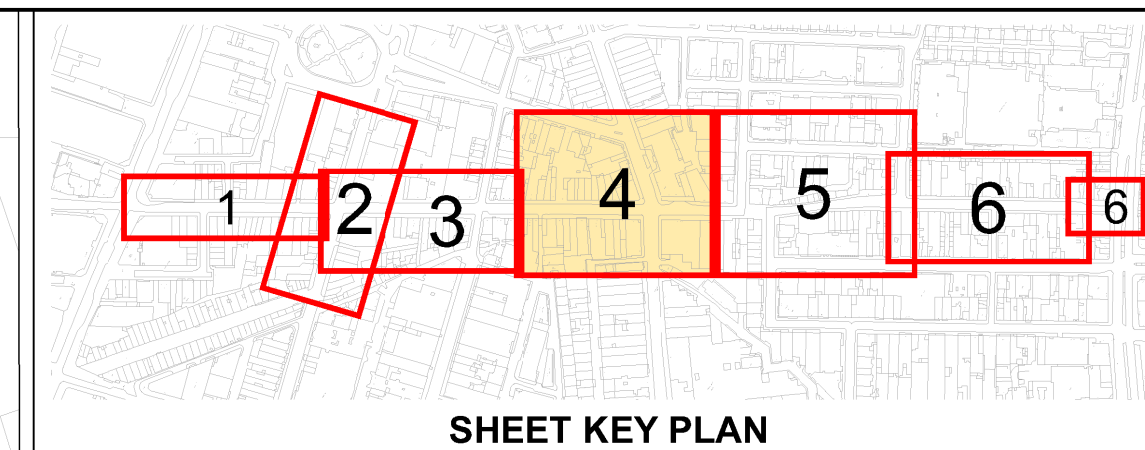
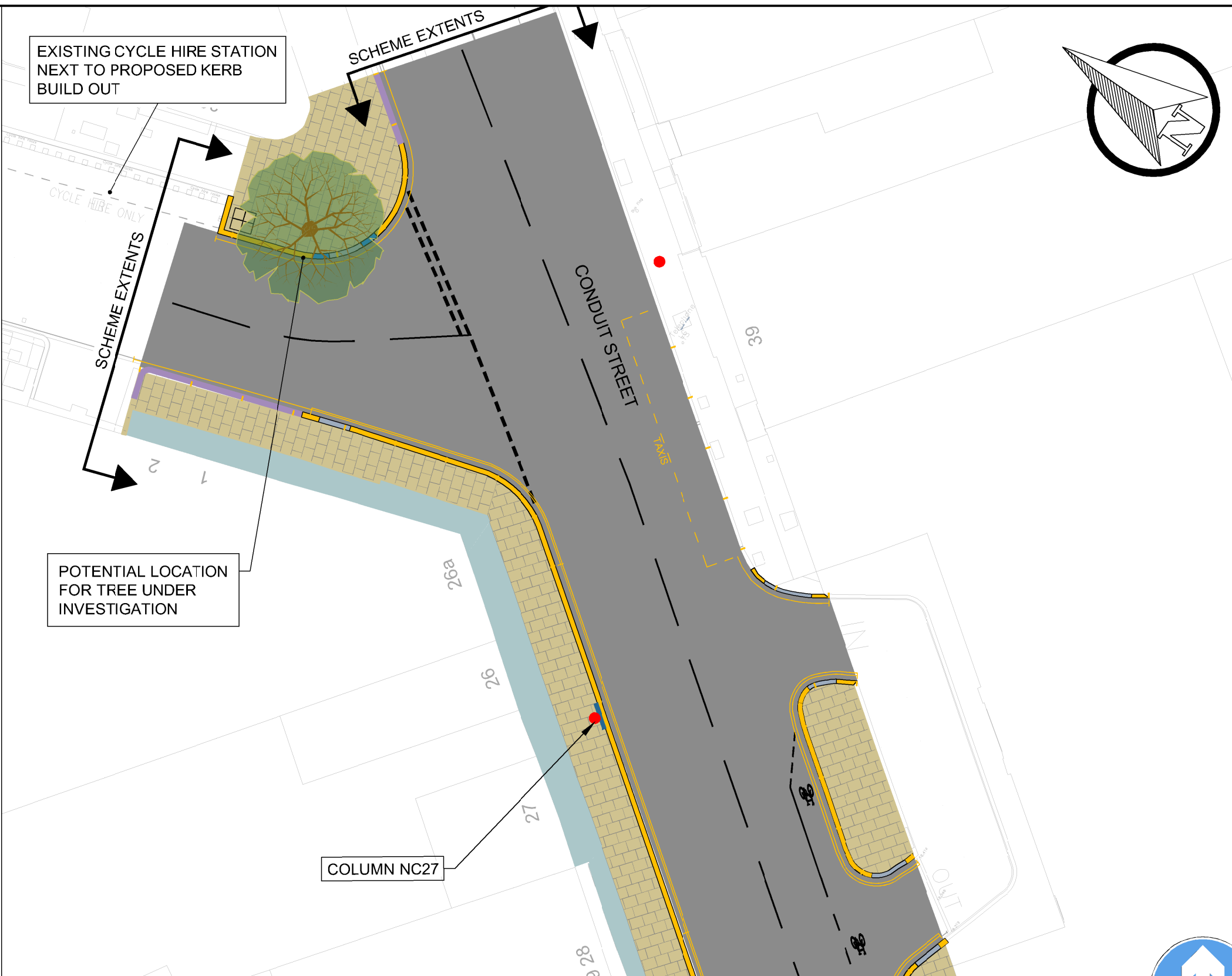


INDICATIVE DESIGN FOR LOADING BAY

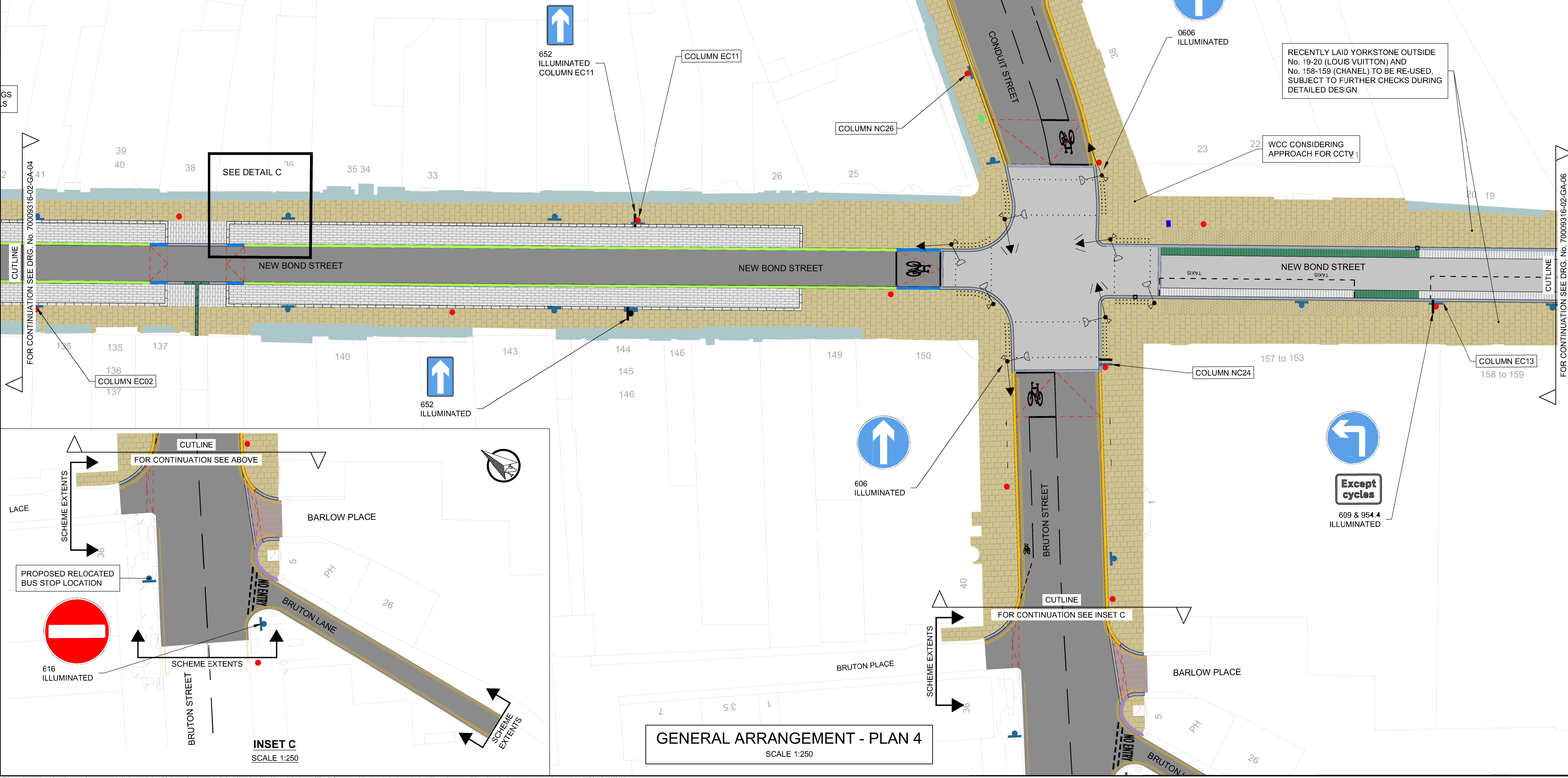


**TYPICAL SECTION**  
OVERALL CONSTRUCTION DEPTH = 600mm, TO BE CONFIRMED IN DETAILED DESIGN

**DETAIL C**  
SCALE @ A1 1:50



NOTE:  
FOR NOTES & LEGEND KEY PLEASE REFER TO DRAWING 70009316-02-GA-01.



**GENERAL ARRANGEMENT - PLAN 4**  
SCALE 1:250

**INSET C**  
SCALE 1:250

A	10.02.2017	MEC	ISSUED FOR INFORMATION	DA	CDS
REV	DATE	BY	DESCRIPTION	CHK	APP

DRAWING STATUS: **DETAILED DESIGN**

25 Mandela Way, London, SE1 5SZ  
www.fconway.co.uk www.wspgroup.com

CLIENT: **City of Westminster**

PROJECT: **BOND STREET STREETScape IMPROVEMENTS**

TITLE: **FINAL DESIGN SHEET 4 OF 6**

SCALE @ A1	DATE	DESIGN/DRAWN	CHECKED	APPROVED	SHEET
1:250	20-01-2017	JT/MEC	DA	CDS	A1
JOB No.	FMC PROJECT No.	BRIEF/DSB No.			
70009316	WWESA 1458	TBC			

DRAWING No. **70009316-02-03-FD-05** REV. **A**

This map is reproduced from Ordnance Survey material with the permission of Ordnance Survey on behalf of the Controller of Her Majesty's Stationery Office © Crown copyright. Unauthorised reproduction infringes Crown copyright and may lead to prosecution or civil proceedings. (WCC)(LA 10009597)